

# PROTECTING CARGO SECURITY & SUPPLY CHAIN RESILIENCE IN AN UNPREDICTABLE WORLD

**THORSTEN NEUMANN**  
PRESIDENT & CEO

**TRANSPORTED ASSET  
PROTECTION ASSOCIATION**  
EUROPE, MIDDLE EAST  
& AFRICA REGION

NATO Industry Expert for Supply Chain Resilience and Cyber Security



**Vorstandsvorsitzender**



Norddeutschland

Allianz für Sicherheit in der Wirtschaft Norddeutschland  
ASW Norddeutschland

<https://aswnord.de/>

# Unprecedented times = More risk

Supply chains are under greater pressure than ever ...

- Conflict in Middle East & Red Sea disruption
  - War in Ukraine
  - Staff shortages across the end-to-end supply chain
  - Disruption to available transport capacity
  - Port & border congestion
  - Driver shortages
- High fuel prices
  - Increased shipping costs
  - Cybercrime
  - Migrant intrusion
  - Cost of living crisis
  - Fuel thefts
  - Covid-19



# Prime targets for cargo thieves

ALL products moving in supply chains are targets for cargo thieves, including:

- Food & Drink
  - Tobacco
  - Furniture/Household Appliances
  - Clothing & Footwear
  - Cosmetics & Hygiene
  - Car Parts
  - Tools/Building Materials
  - Phones
  - Computers/Laptops
  - Consumer Electronics
- Pharmaceuticals
  - Metal
  - Toys/Games
  - Bicycles & Sports Equipment
  - Cash-in-transit
  - Agricultural Materials
  - Jewellery/Precious Metals
  - + trucks with no loads are frequently reported stolen
  - + Fuel thefts



# About TAPA

The Transported Asset Protection Association (TAPA) is the world's leading supply chain resilience and security Association

- Established 1997 in three regions: the Americas, Asia Pacific, and Europe, Middle East & Africa
- Over 900 member companies in the EMEA region
- Bringing together Manufacturers, Logistics Service Providers, Law Enforcement Agencies, Insurers & Security Service Providers and other supply chain security stakeholders
- **Mission:** to minimise cargo losses and optimise the resilience of our members' supply chains



# The association of supply chain resilience leaders... Manufacturers/Shippers



# ... And the world's leading logistics service providers



**TIS – ‘Google’ for cargo crime incidents**



TAPA EMEA INTELLIGENCE SYSTEM

# €1,036,494

**Average loss for reported major crimes with a value of €100K+ in last 3 years**





# €827,000

**Of goods reported stolen from  
supply chains in EMEA every 24  
hours for the last 3 years**



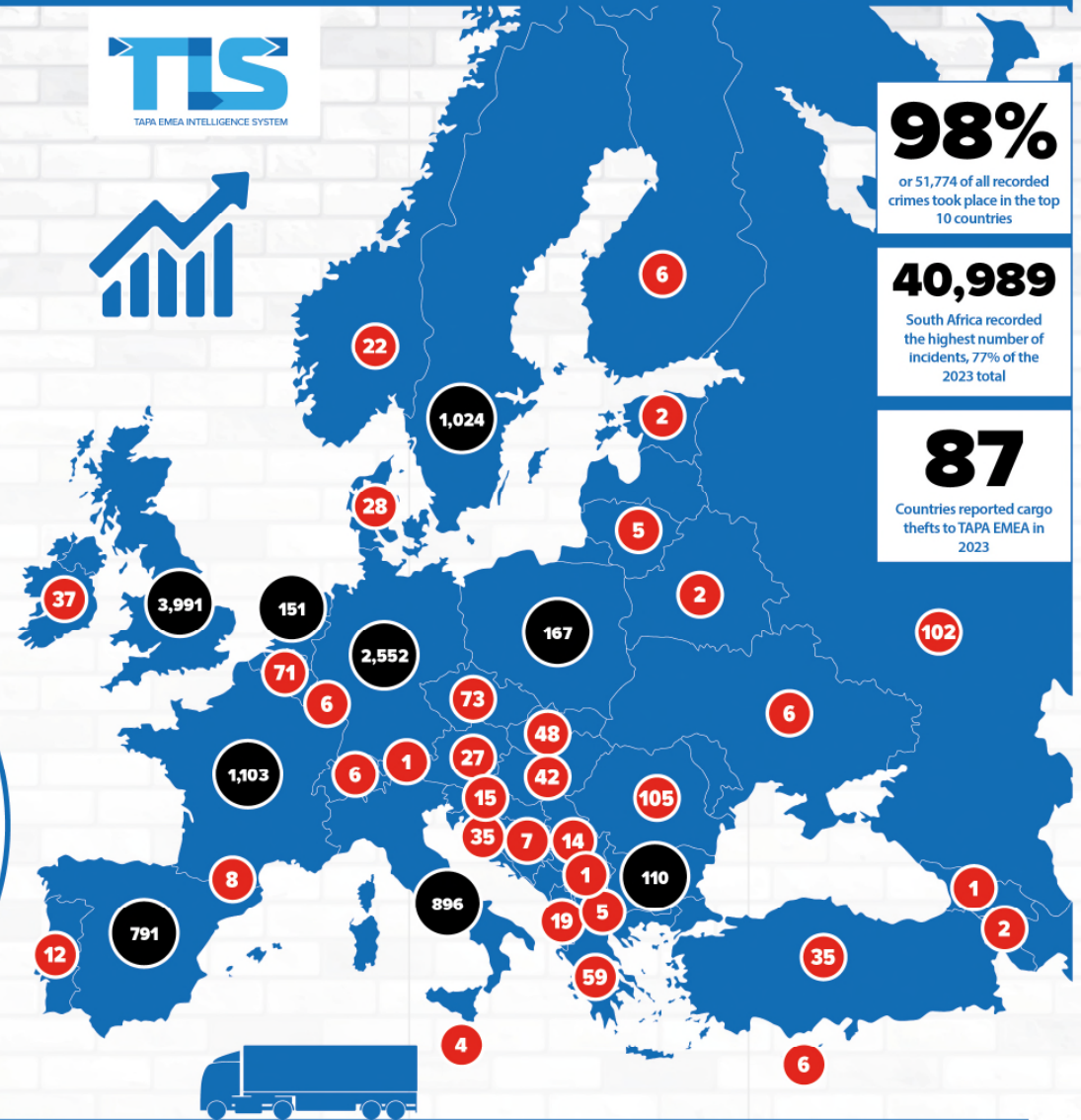
# CARGO CRIME BY COUNTRY



NO. OF INCIDENTS		
TOP 10	No. of Incidents	Percentage
▶ South Africa	<b>40,989</b>	77.616%
▶ United Kingdom	<b>3,991</b>	7.557%
▶ Germany	<b>2,552</b>	4.832%
▶ France	<b>1,103</b>	2.089%
▶ Sweden	<b>1,024</b>	1.939%
▶ Italy	<b>896</b>	1.697%
▶ Spain	<b>791</b>	1.498%
▶ Poland	<b>167</b>	0.316%
▶ Netherlands	<b>151</b>	0.286%
▶ Bulgaria	<b>110</b>	0.208%
OTHER INCIDENTS	18 MONTHS	2020
▶ Romania	105	0.199%
▶ Russian Federation	102	0.193%
▶ Czechia	73	0.138%
▶ Belgium	71	0.134%
▶ Greece	59	0.112%
▶ Nigeria	55	0.104%
▶ Slovakia	48	0.091%
▶ Hungary	42	0.080%
▶ Ireland	37	0.070%
▶ Turkey	35	0.066%
▶ Egypt	35	0.066%
▶ Croatia	35	0.066%
▶ Denmark	28	0.053%
▶ Austria	27	0.051%
▶ Norway	22	0.042%
▶ Albania	19	0.036%
▶ Kenya	15	0.028%
▶ Slovenia	15	0.028%
▶ Serbia	14	0.027%
▶ Portugal	12	0.023%
▶ Morocco	9	0.017%
▶ Andorra	8	0.015%
▶ Lebanon	8	0.015%
▶ Bosnia and Herzegovina	7	0.013%
▶ Tunisia	7	0.013%
▶ Saudi Arabia	7	0.013%
▶ United Arab Emirates	7	0.013%
▶ Switzerland	6	0.011%
▶ Cyprus	6	0.011%
▶ Ukraine	6	0.011%
▶ Finland	6	0.011%
▶ Luxembourg	6	0.011%
▶ Sudan	5	0.009%
▶ Ghana	5	0.009%
▶ North Macedonia	5	0.009%
▶ Uganda	5	0.009%

▶ Lithuania	5	0.009%
▶ Malta	4	0.008%
▶ Algeria	4	0.008%
▶ Kuwait	4	0.008%
▶ Ethiopia	4	0.008%
▶ Yemen	4	0.008%
▶ Israel	3	0.006%
▶ Sierra Leone	3	0.006%
▶ Liberia	3	0.006%
▶ Somalia	3	0.006%
▶ Lesotho	3	0.006%
▶ Belarus	2	0.004%
▶ Mozambique	2	0.004%
▶ Mauritania	2	0.004%
▶ Guinea-Bissau	2	0.004%
▶ Côte d'Ivoire	2	0.004%
▶ Benin	2	0.004%
▶ Syrian Arab Republic	2	0.004%
▶ Azerbaijan	2	0.004%
▶ Congo, Democratic Republic of the	2	0.004%
▶ Equatorial Guinea	2	0.004%
▶ Namibia	2	0.004%

▶ Estonia	2	0.004%
▶ Eswatini	2	0.004%
▶ Libya	2	0.004%
▶ Zimbabwe	1	0.002%
▶ Kosovo	1	0.002%
▶ Mauritius	1	0.002%
▶ Djibouti	1	0.002%
▶ Armenia	1	0.002%
▶ Liechtenstein	1	0.002%
▶ Burundi	1	0.002%
▶ Cabo Verde	1	0.002%
▶ Mayotte	1	0.002%
▶ Congo	1	0.002%
▶ Iraq	1	0.002%
▶ Gambia	1	0.002%
▶ Angola	1	0.002%
▶ Palestine, State of	1	0.002%
▶ Tanzania, United Republic of	1	0.002%
▶ Senegal	1	0.002%



**98%**

or 51,774 of all recorded crimes took place in the top 10 countries

**40,989**

South Africa recorded the highest number of incidents, 77% of the 2023 total

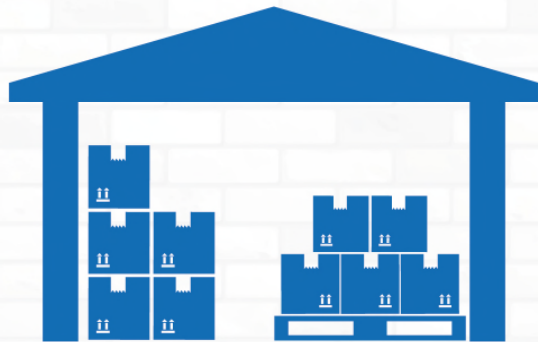
**87**

Countries reported cargo thefts to TAPA EMEA in 2023



# Industry Standards

In EMEA, TAPA offers x3 industry standards - minimum security standards 'created by the industry, for the industry' which are independently audited and reviewed every 3 years to address new threats...



**FACILITY SECURITY REQUIREMENTS**



**TRUCKING SECURITY REQUIREMENTS**



**PARKING SECURITY REQUIREMENTS**

# How you can help us To help you ...

- Join the TAPA EMEA Family
- Send us cargo crime incident data - [tisteam@tapaemea.org](mailto:tisteam@tapaemea.org)
- Adopt our security standards
- Share cargo risk and security intelligence



**WE ARE STRONGER WHEN WE WORK TOGETHER**

# RESILIENCE

In the fight against cargo crime and supply chain threats, we are stronger when we join together...

THANK YOU



ANY QUESTIONS?

RESILIENCE  
INDUSTRY SOLUTIONS TO SUPPLY CHAIN RESILIENCE RISKS

[WWW.TAPAEMEA.ORG](http://WWW.TAPAEMEA.ORG)